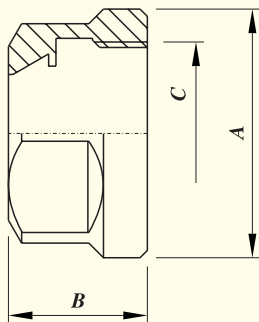


HEXAGONAL NUT FOR 'ER' COLLET CHUCK

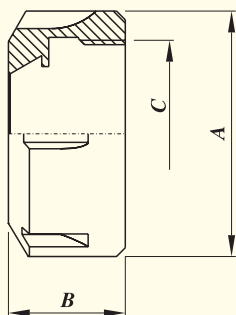
DIN 6499



TYPE	A	B	C	Spanner to be used
UM/ER 11	19,0	11,3	M 14 x 0,75	GS 17
UM/ER 16	28,0	28,0	M 22 x 1,50	GS 25
UM/ER 20	34,0	19,0	M 25 x 1,50	E 20

SLOTTED NUT FOR 'ER' COLLET CHUCK

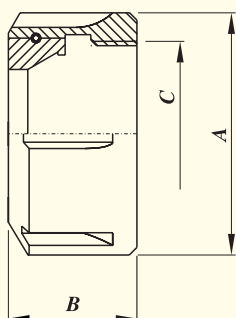
DIN 6499



TYPE	A	B	C	Spanner to be used
UM/ER 25	42,0	20,0	M 32 x 1,50	E 25
UM/ER 32	50,0	22,3	M 40 x 1,50	E 32
UM/ER 40	63,0	25,3	M 50 x 1,50	E 40
UM/ER 50	78,0	35,3	M 64 x 2,00	E 50

SLOTTED BALL BEARING NUT FOR 'ER' COLLET CHUCK

DIN 6499



Ball bearing clamping nut KM / ER

For heavy duty demand when milling,
50% increase in clamping pressure,
with sealed bearing track,
interchangeable with
UM / ER 25, 32, 40, 50.

TYPE	A	B	C	Spanner to be used
KM/ER 25	42,0	20,0	M 32 x 1,50	E 25
KM/ER 32	50,0	22,3	M 40 x 1,50	E 32
KM/ER 40	63,0	25,3	M 50 x 1,50	E 40
KM/ER 50	78,0	35,3	M 64 x 2,00	E 50