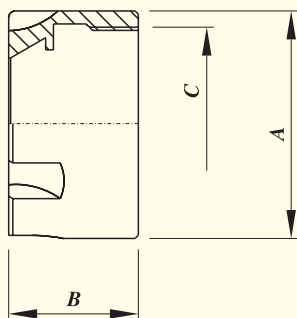


## MINI NUT FOR 'ER' COLLET CHUCK

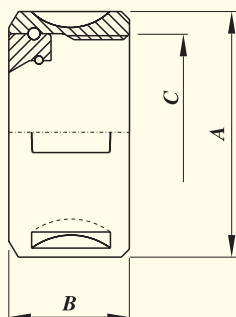
For minimum external diameter.



TYPE	A	B	C	Spanner to be used
UM/ER 8M	12.0	10.8	M 10 x 0.75	E 8M
UM/ER 11M	16.0	11.3	M 13 x 0.75	E 11M
UM/ER 16M	22.0	17.0	M 19 x 1.00	E 16M
UM/ER 20M	28.0	19.0	M 24 x 1.00	E 20M
UM/ER 25M	35.0	20.0	M 30 x 1.00	E 25M

## SLOTTED NUT FOR 'RDO' CHUCK

DIN 6388



Ball bearing clamping nut UM / RDO

For heavy duty demand when milling,  
50% increase in clamping pressure,  
with sealed bearing track.

TYPE	A	B	C	Spanner to be used
UM/ER RDO 25	43.0	24.0	M 33 x 1,5	HS 25
UM/ER RDO 35	60.0	30.0	M 48 x 2,0	HS 40
UM/ER RDO 44	72.0	34.0	M 60 x 2,5	HS 50