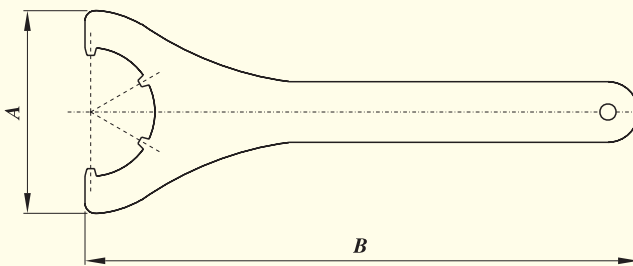


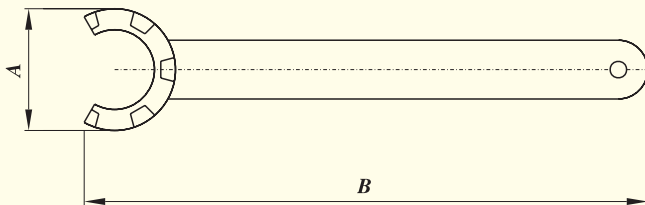
SPANNER TYPE : GS

TYPE	A	B	Suitable for Nut
GS 17	40	155	UM/ER 11
GS 25	53	210	UM/ER 16



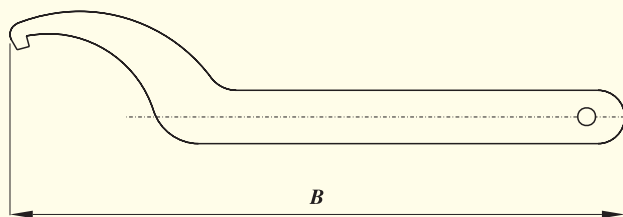
SPANNER TYPE : B

TYPE	A	B	Suitable for Nut
E 20	55	180	UM/ER 20
E 25	65	210	UM/ER 25
E 32	75	250	UM/ER 32
E 40	90	290	UM/ER 40
E 50	110	350	UM/ER 50



SPANNEER TYPE : EM

TYPE	A	B	Suitable for Nut
E 8M	12,4	70	ER 8M
E 11M	16,8	90	ER 11M
E 16M	22,5	110	ER 16M
E 20M	29,0	120	ER 20M
E 25M	36,0	130	ER 25M



SPANNER TYPE : HS

TYPE	B	Suitable for Nut
HS 25	160	UM/RDO 25
HS 35	228	UM/RDO 35
HS 44	280	UM/RDO 44